

BN ProSpec[®] System Secure Download Software

Instruction Manual

– Instructions for Use –

Manual Version: 2.1
Date of Issue: 2016-08

We reserve the right to make changes in the course of technical development without previous notice.

© 2015 Siemens Healthcare Diagnostics Products GmbH. All rights reserved.

Emil-von-Behring-Str. 76
35041 Marburg
Germany

Neither this manual nor any parts of it may be duplicated or transmitted in any way without the written approval of Siemens Healthcare Diagnostics Products GmbH.

Trademarks

BN ProSpec is a trademark of Siemens Healthcare Diagnostics.
Microsoft and **Windows** are trademarks of Microsoft Corporation.

Software Copyrights

Software of Siemens Healthcare Diagnostics Products GmbH is the copyright property of Siemens. All rights to this software are retained by Siemens. You are entitled to use this software as well as the printed documentation relating to it on one single, non-transferable workstation.

Disclaimer

Siemens Healthcare Diagnostics has validated the provided instructions, reagents, instrument, software and customizable features for this system to optimize product performance and meet product specifications. User defined modifications are not supported by Siemens as they may affect performance of the system and test results.



Siemens Healthcare Diagnostics Products GmbH
Emil-von-Behring-Str. 76
35041 Marburg
Germany
www.siemens.com/diagnostics

Table of contents

1	Introduction	3
1.1	About this manual	3
1.2	Orientation tips	3
1.3	Service	4
1.4	Warranty	4
1.5	Software copyrights	5
1.6	Additional software copyrights	5
2	Manual version history	5
3	Safe handling	5
3.1	Intended use	5
3.2	General safety information	6
3.2.1	Operator qualification	6
3.3	Safety messages	6
3.3.1	Signal words in safety messages	6
3.3.2	Structure of safety messages	7
3.4	Life cycle	7
3.5	System requirements	7
3.6	Delivery, installation and disposal	7
4	Description of the dialog Secure Download 2.0	7

5	Installing lot data with the Secure Download software	8
5.1	Installing lot data via SRS	9
5.2	Installing lot data via the Laboratory Diagnostics Document Library	9
6	Installing update packages with the Secure Download software	11
6.1	Downloading update packages via the Laboratory Diagnostics Document Library	12
6.2	Installing update packages on the computer	13

1 Introduction

This chapter gives information on this manual, service, and warranty.

1.1 About this manual

This manual describes the use of the Secure Download software in clinical laboratories.

This manual must be read in addition to the instruction manual of the system.

Note: Depending on the operating system, the selected languages, and regional settings, the screenshots in this manual can differ from the display on the screen.

1.2 Orientation tips

Bullets

Bullets indicate a list.

Example:

The box contains:

- Monitor
- Keyboard
- Manual

Numbers

Numbers indicate a procedure.

Example:

1. Open the box.
2. Check the content.
3. Read the manual.

The numbering is also used if the procedure includes only 1 step.

Arrow

An arrow indicates 1 or more results of an action.

Example:

1. Select **Print**. → The dialog **Print** is displayed.

Bold type

Terms used in the software are printed in **bold** type.

Example:

- Dialog **Print**

Bold type is also used to put a special emphasis on something.

Example:

This process must **never** be canceled.

Gray note

Gray notes indicate important background information.

Example:

Note: Once the process has been started, it cannot be interrupted.

1.3 Service

Siemens and its representatives are available to service the software during customary local office hours. Should you require service at any other time, contact Siemens service or your local Siemens representative. In the following, **Siemens service** refers to both Siemens service or any local representative authorized by Siemens. You will receive information about how to reach Siemens service when the software is installed, or visit www.siemens.com/diagnostics to find contact information.

Siemens will inform you about the availability and cost of updates.

The scope of agreed service is included in your service contract.

1.4 Warranty

Siemens and its representatives guarantee that the software shows no defects after installation, and during operation if operated according to this manual. For further information about warranty, contact Siemens service.

The warranty is not valid for damage that occurs as a consequence of non-observance of this manual.

Repairs and servicing must only be carried out by persons authorized by Siemens.

Only use the software as intended. If the software is not used as intended, Siemens disclaims all liability for damage to the system and the software.

1.5 Software copyrights

Software of Siemens is the copyright property of Siemens. All rights to this software are retained by Siemens. You are entitled to use this software as well as the printed documentation relating to it on one single, non-transferable workstation.

1.6 Additional software copyrights

This device includes open source software. Such software is provided by Siemens under the terms of the open source software licenses applicable to such software, and is distributed WITHOUT ANY WARRANTY as set forth in the corresponding licenses. Those terms require that Siemens provides the following notices and information to the purchaser of this device. Where required by the specific license terms, Siemens will make the source code for such open source software available upon request from Siemens in accordance with the terms of the relevant open source license. Versions of the GNU operating system General Public License (GPL) and Lesser General Public License (LGPL) are available at www.gnu.org.

For the NSIS - nullsoft scriptable install system under the zlib/lippng License, v2.4.6: © 1999 - 2009 Contributors

2 Manual version history

Manual			Software		
Version	Date	Changes	Full version	Release version	
1.0	2014-03	First version	1.0	1	
1.1	2015-01	Update	1.0	1	
2.0	2016-07	Update	2.0	2	
2.1	2016-08	Update	2.0	2	

Table 1 Manual version history

3 Safe handling

This chapter describes the intended use of the software and gives general safety instructions.

3.1 Intended use

The Secure Download software enables to import and, if applicable, install Siemens released files to the corresponding system.

3.2 General safety information

The software has been inspected for technical safety before distribution. To maintain this status and to ensure hazard-free operation:

- Always follow the instructions in this manual and in the instruction manual of the system.
- Only use the software as intended. If the software is not used as intended, Siemens disclaims all liability for any personal injury and property damage.
- Always follow good laboratory practice.
- Make sure the operating and storage conditions are met.
- Make sure to use a virus protected computer and a virus-checked USB flash drive for downloading lot data files and update packages from the internet.

3.2.1 Operator qualification

Risk of property damage due to lack of knowledge. To avoid this hazard:

- The software must be operated only by persons whose skills, knowledge, and practical experience qualify them to do so, and who have read and understood this manual.

3.3 Safety messages

All safety messages must be observed to avoid hazardous situations which can result in death, injury, or damage to the equipment.

3.3.1 Signal words in safety messages

The following explains the signal words and their meaning.




Signal word	Meaning
 DANGER	Indicates a hazardous situation which, if not avoided, will result in death or serious injury
 WARNING	Indicates a hazardous situation which, if not avoided, could result in death or serious injury
 CAUTION	Indicates a hazardous situation which, if not avoided, may result in minor or moderate injury
NOTICE	Indicates a property damage message

Table 2 Signal words

3.3.2 Structure of safety messages

The following explains the structure of safety messages.

WARNING

This section states nature and source of the hazard

This section states potential consequences of not avoiding the hazard. This section can be combined with the previous section.

- This section lists preventive actions to avoid the hazard.

3.4 Life cycle

This chapter describes the stages the Secure Download software goes through, from delivery to disposal, and the requirements involved for the operator with each stage.

3.5 System requirements

The Secure Download software 2.0 can only be used in conjunction with the BN ProSpec software version 1.4.1 or higher and operating system Windows 7.

3.6 Delivery, installation and disposal

The Secure Download software is delivered and installed by Siemens service. Disposal is not required.

4 Description of the dialog Secure Download 2.0

This chapter describes the dialog **Secure Download 2.0**.

The dialog is used to load and install data packages provided by Siemens on the system.

Information	Explanation
Import date	Date and time of data package import
Update	Name of data package
Created	Date and time of data package creation
Version	Version of data package

Table 3 Dialog Secure Download 2.0

5 Installing lot data with the Secure Download software

Information	Explanation
Mandatory	Information about mandatory or optional update
Status	Status of data package installation
Installation date	Date and time of data package installation
Description	Short description of the data package content (in English) Estimated installation time

Table 3 Dialog Secure Download 2.0 (continued)

Action buttons

For action buttons, see Table 4.

Action button	Explanation
Import	Displays the dialog Select file
Install	Installs the selected data package
Print	Displays the dialog Print
About	Displays information about the software
Close	Closes the dialog

Table 4 Action buttons

5 Installing lot data with the Secure Download software

This chapter describes how to install lot data with the Secure Download software. Depending on the technical prerequisites, lot data can be downloaded from the Laboratory Diagnostics Document Library or via Siemens Remote Service (SRS)¹.

Siemens uploads new data to the Document Library at regular intervals.

To install lot data via SRS, proceed with Chapter 5.1.

To install lot data via the Laboratory Diagnostics Document Library, proceed with Chapter 5.2.

¹ Siemens Remote Service (SRS) is an optional service which requires additional hardware and an additional service contract. SRS is not available for all system software versions.

5.1 Installing lot data via SRS

This chapter describes how to install lot data on systems using SRS.

1. Start the Secure Download software. → The dialog **Secure Download 2.0** with a list of all available and performed data packages is displayed.
2. From the list, select the required lot data.
3. Click **Install**. → A message is displayed.
4. Confirm the message with **Yes**.
5. Proceed with Chapter 5.2, step 17.

5.2 Installing lot data via the Laboratory Diagnostics Document Library

This chapter describes how to download lot data from a separate computer with internet access and how to transfer the files to the system computer using a USB flash drive as an example. Depending on technical prerequisites and local standards and regulations, it is also possible to transfer lot data using other data carriers or a network.

Downloading lot data from the internet

You will need:

- USB flash drive
- Internet computer

NOTICE

Damage to the system due to transfer of malware

- Make sure to use a virus protected computer and a virus checked USB flash drive for downloading data packages from the internet.

1. Connect a USB flash drive to the internet computer.
2. With the internet computer, open the Siemens Laboratory Diagnostics internet site www.healthcare.siemens.com/laboratory-diagnostics.
3. Select **Laboratory Diagnostics Services > Services and Support > Laboratory Diagnostics Document Library**.
4. Click **Access/Login**.
5. Login to the Laboratory Diagnostics Document Library.

5 Installing lot data with the Secure Download software

6. Search, download and store the appropriate lot data file to the USB flash drive.

Note: For more information on how to download files from the library, see the Document Library Download Instruction Manual.

7. Remove the USB flash drive from the internet computer.

Transferring lot data to the system computer

WARNING

Delay of results due to installation of lot data during measurements. Measurements will be interrupted.

Death or serious injury to the patient can result.

- Never install lot data when measurements are running.
- Wait until all running measurements are finished.

8. Connect the USB flash drive to the BN ProSpec system computer.
9. Start the Secure Download software. → The dialog **Secure Download 2.0** with a list of all available and performed update packages is displayed.
10. On the upper right side, click **Import**. → The dialog **Select file** is displayed.
11. From the list, select the lot data package.
12. Click **Open**. → The dialog **Import Secure Download file** is displayed.
13. Click **Extract file**. → If notes are available, the dialog **Confirmation** is displayed. In the dialog, all available notes are displayed.
14. Read the notes.
15. Close the notes.
16. Click **Confirm** to confirm that you have read all available notes. → The lot data are extracted.

Note: Using the Microsoft Windows Explorer, confirmed notes are still accessible by navigating to the following path: **C:\Download\LotData**.

17. Click **Close** to close the Secure Download software.
18. Start the BN ProSpec system software.

19. In the navigation bar, click **System**. → The dialog **BN ProSpec - System** is displayed.
20. On the bottom left, click **Lot data disk**. → The following dialog is displayed:

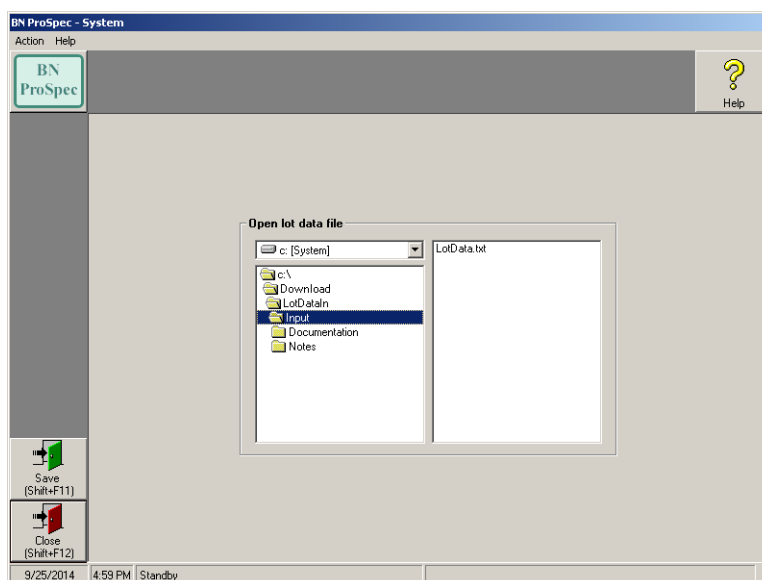


Figure 1 Open lot data file

21. Click the arrow of the drop-down list and select the correct path to the lot data: **C:\Download\LotData**.
 22. Click **Save**. → A message is displayed.
 23. Confirm this message and the following messages with **OK**.
- Installing lot data is finished.

6 Installing update packages with the Secure Download software

This chapter describes how to install update packages with the Secure Download software, for example security patches.

Depending on the technical requirements, the update packages are available via the Laboratory Diagnostics Document Library or via Siemens Remote Service (SRS)¹.

To install update packages via the Laboratory Diagnostics Document Library, proceed with Chapter 6.1.

¹ Siemens Remote Service (SRS) is an optional service which requires additional hardware and an additional service contract. SRS is not available for all system software versions.

To install update packages via SRS, proceed with Chapter 6.2.

WARNING

Delay of results due to installation of update packages during measurements. Measurements will be interrupted.

Death or serious injury to the patient can result.

- Never install update packages when measurements are running.
- Wait until all running measurements are finished.

6.1 Downloading update packages via the Laboratory Diagnostics Document Library

This chapter describes how to download update packages from a separate computer with internet access and how to transfer the files to the system computer using a USB flash drive as an example. Depending on technical prerequisites and local standards and regulations, it is also possible to transfer update packages using other data carriers or a network.

You will need:

- USB flash drive
- Internet computer

NOTICE

Damage to the system due to transfer of malware

- Make sure to use a virus protected computer and a virus checked USB flash drive for downloading data packages from the internet.

Downloading update packages on a USB flash drive

1. Connect a USB flash drive to the internet computer.
2. With the internet computer, open the Siemens Laboratory Diagnostics internet site www.healthcare.siemens.com/laboratory-diagnostics.
3. Select **Laboratory Diagnostics Services > Services and Support > Laboratory Diagnostics Document Library**.
4. Click **Access/Login**.
5. Login to the Laboratory Diagnostics Document Library.
6. Search, download and store the appropriate update package to the USB flash drive.

Note: For more information on how to download files from the library, see the Document Library Download Instruction Manual.

Transferring update packages to the system computer

7. Remove the USB flash drive from the internet computer.
8. Connect the USB flash drive to the BN ProSpec system computer.
9. Start the Secure Download software. → The dialog **Secure Download 2.0** with a list of all available and performed update packages is displayed.
10. On the upper right side, click **Import**. → The dialog **Select file** is displayed.
11. From the list, select the appropriate update package.

Note: If a ZIP file is selected that contains more than one update package, the dialog **Select file** is displayed to select and open an update package from the ZIP file. Each update package from the ZIP file has to be imported separately.

12. Check the displayed file:
 - If the file type is **ZIP** and the file contains more than one data file, go to step 13.
 - Otherwise go to step 15.
13. Click **Open**. → The dialog **Select file** is displayed.
14. Select an update package.
15. Click **Open**. → The dialog **Import Secure Download file** is displayed.
16. Click **Extract file**. → The update package is imported.
17. To import more update packages from the ZIP file, go to step 10.

To install update packages, proceed with Chapter 6.2.

6.2 Installing update packages on the computer

This chapter describes how to install update packages on the computer.

1. Start the Secure Download software. → The dialog **Secure Download 2.0** with a list of all available and performed update packages is displayed.
2. From the list, select one or more update packages. → If notes are available, the dialog **Confirmation** is displayed. In the dialog, all available notes are displayed.
3. Read the notes.
4. Close the notes.
5. Click **Confirm** to confirm that you have read all available notes.

6 Installing update packages with the Secure Download software

6. Click **Install**. → A message is displayed.
7. Confirm the message with **Yes**. → The installation of the update starts. All installation steps are performed automatically.

NOTICE

Failed installation due to interrupted installation process

Update packages may not be installed.

- Do not shut down the computer until the installation is finished.

Installing update packages is finished.