



# MAMMOMAT Revelation

Operator Manual – Important restrictions  
concerning the use of the MAMMOMAT Revelation  
VC20

# Restrictions

This document is a supplement to the following documents:

- MAMMOMAT Revelation - Operator Manual
- MAMMOMAT Revelation - Breast Biopsy option
- MAMMOMAT Revelation - Tomosynthesis option
- MAMMOMAT Revelation - Insight BD option
- MAMMOMAT Revelation - TiCEM option

## General

- For customers who receive electronic customer documentation only: If an error message appears when opening the PDF files from the stick, please copy the content of the stick locally to your drive and open the file from there. Please ensure that you are using another drive than the Acquisition Workstation.
- The storage capacity icon on the status line shows the common local database usage, and displays the greater value of either the patient database or the image database fill level visible on the **Resource Monitor**. AutoDelete always checks the fill level of the image database fill level, which not necessarily equals to the percentage shown in the status line.
- In case of a user abort during main exposure in AEC or OPDOSE mode, only the current-time-product and dose of the pre-shot is indicated. The actual applied dose might be higher.
- Reenter from empty (without Image) study is not possible.
- No image quality tested for images send to printer.
- After emergency stop the system has to be shutdown and started again.
- If there is a delay of the Storage Commitment response from PACS the transfer of data from the modality (**InExam Transfer** and **EndExam Transfer**) will be blocked. Jobs with status **waiting** will block all other network sending jobs and reconstruction jobs. Please check the status in the job control and send the missing jobs manually.
- Note that the configuration settings must be assigned to each individual user.
- If a study is in the MPPS status "Done", the images of this study can no longer be corrected. It is possible to not set a study to "Done" when it is finished by opening the MPPS dialog by setting the corresponding check mark and then aborting it using "Cancel".
- In case MPPS status is not "in progress", followed by a procedure registering, acquiring and closing a patient. After reentering, correcting, closing the same patient and select "Completed" or "Discontinue" at the MPPS menu and then reenter the patient to try to correct the PV again, an error message appears, requiring a restart of the system.
- Zoom/Pan function: The image display may behave erratically depending on the speed of the zoom process.
- The 19" color EIZO monitor is a compatible component (Material number: 1 1171888).

## Breast Biopsy

- After connecting the biopsy unit error 0-48 can occur. If this happens please unplug the biopsy unit and plug it in again. The connection to the mammo unit will be restarted. Please confirm the error 0-48 three times until the blocked reason is not shown anymore.
- Image is shifted to right side, when **Zoom/Pan** is used for first view.
- Control box  
In case of electrostatic discharge of high voltages (> 8 kV) at control box, the Mammo Unit might switch off suddenly. Please restart the Mammo Unit for recovery.
- Biopsy handbox  
In case of electrostatic discharge of high voltages (> 8 kV) at Biopsy handbox, it might freeze. Please disconnect and reconnect the coiled cable for recovery.
- Do not press any of the following keys on the keyboard when moving the biopsy target to define the right position with the mouse.
  - All keys on the number block
  - All arrow keys
  - Insert, delete, pos1, end, pageUp, pageDown
 This is valid for the stereo biopsy examination (scout exposure, stereo pair) and for the tomosynthesis biopsy examination (tomo scout exposure, stereo pair).
- Only 18 characters can be used to name needle.
- If target is selected in the target list, the target in the image will be highlighted.
- By configuration of lateral marker needle holder (y:110-200) and corresponding fine needle (length: 50-100), the targetable area is shifted outside image.
- The acquisition workstation shall display and store a wrong magnification factor for specimen sideways images.
- Please verify the offset values for the needle holders of Brevera during the set-up of the system (see the MAMMOMAT Revelation Breast Biopsy Operator Manual, register Configuration, chapter 6.3.4 Accessories - Biopsy systems) and correct the values if needed.

## Tomosynthesis

- After re-enter a procedure with 2D and tomosynthesis projection views where the tomosynthesis views are in the middle of the procedure it can happen, that the tomosynthesis projection views are displayed after the complete 2D projection view set.
- In case a re-registered study is started with a tomo examination and followed by a new re-registration with acquiring 2D images only, AWS fails at the next reenter.
- For all Tomo related modes the Dose Level "High" can only be used for breast thicknesses higher than 25 mm.

- During tomo acquisition and reconstruction it's not possible to view and change the already acquired tomo views.
- That re-reconstruction should take place after last projection view.
- No reconstruction to the first tomo scout is possible.
- If mAs in scout image (AEC) is almost at the limit it might happen that in further tomo scouts (MANUAL) an error occurs. In this case start new compression phase with new reference scout and increase kV value.
- If detector is fully covered by breast tissue, please do not use small compression paddles to avoid black tomo slices.
- In case **RPG Standard** is used the image text in the tomo slices is not correct, question marks are displayed instead of the string "Standard".
- In case the tomosynthesis slices are too dark when acquiring implant views please use the window/level function to review the complete breast.
- In case you need to adjust the bounding box for small objects make sure to include portion of direct radiated area into the bounding box.

## Insight BD

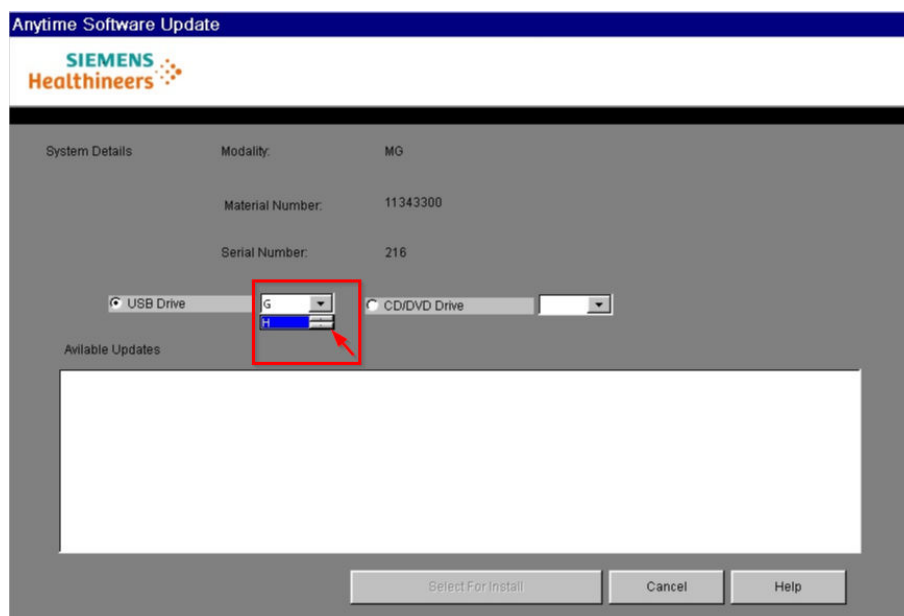
- It is possible to toggle the display/usage of the **INBD**-Button on **Acquisition** tab card. The window **Insight BD** does not toggle.
- The **Insight BD** may not be calculated properly for the tomo projection view with Spot Plus compression plate. The function **Reject Insight BD manually** is not working.

## TiCEM

- If a TiCEM projection view is corrected (e.g. from R-CC to L-MLO) the series in patient browser are not updated.
- If TiCEM projection view is selected and the display marker is activated: When acquiring images from the left (e.g. L-CC), the display marker is positioned at the wrong corner in combined images.

## Software Update

- When selecting the USB drive in the Anytime Software Update (ASU) service window, only one USB drive is initially displayed in the dropdown menu. Click the arrow button again to make the second USB drive visible in the dropdown menu.



- After a remote update, it is not possible to use the **Reenter examination** button if this exam was created with a previous version.



This document is maintained in electronic form through Siemens Healthineers distribution channels. Printed versions not provided by Siemens Healthineers and/or downloaded copies are considered uncontrolled.



---

**Siemens Healthineers Headquarters**

Siemens Healthineers AG  
Siemensstr. 3  
91301 Forchheim  
Germany  
Phone: +49 9191 18-0  
siemens-healthineers.com

**Manufacturer**

Siemens Healthcare GmbH  
Henkestr. 127  
91052 Erlangen  
Germany